

## CHAPEL NEWSLETTER JANUARY 2025



From Linda Flatley <pastor@chapelbytheseawa.org>

Date 2025-01-10 18:33

### New Year Blessings from Chapel by the Sea

Worship with us in person Sundays at 10:30 am  
or live online using the Zoom link 10:30 am (PST)

<https://us02web.zoom.us/j/87599200291?pwd=TzZoSFVGYWhLWnlkSDdJK2lKalf1Zz09>



The next few Sundays in worship we  
celebrate God's self-revelation in Jesus Christ.

Sundays after Epiphany include:

January 12 - The Baptism of the Lord

January 19 - The Wedding in Cana

January 26 - Jesus Our Guiding Star



### DISCOVERY CLASS THIS SUNDAY

after worship from 11:45 am - 1:15 pm

join Pastor Linda in the chapel hall

to learn more about the mission and ministry  
of the Presbyterian Church USA (PCUSA)

and what membership in a particular church means.



**On January 19 we celebrate the upcoming  
marriage of Brijett Meissner & Kyle Fry  
with a wedding shower after worship.**

**January 19<sup>th</sup>, Noon- 2:00**

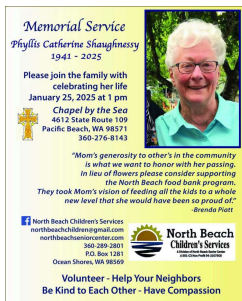
Chapel by the Sea

4612 State Route 109,

Pacific Beach, WA 98571

Cake & Beverages will be served.

**Saturday, January 25 at 1 pm**  
**A Service of Witness to the Resurrection**  
**for our member Phyllis Shaughnessy**  
**founder of the Green Lantern Lunch Program**



*Well done, good and faithful servant\_Matthew 25:23*

**The Annual Congregation Meeting**  
**will be held on January 26 after worship.**  
**Members will vote on: elder nominations,**  
**Lee Marriott, Ada Mae Woffinden,**  
**Pastor's terms of call,**  
**Receive the 2025 budget.**

**Thank you to those who have already**  
**pledged for 2025. The chapel is**  
**maintained and sustained by your**  
**generous giving to our operating fund**  
**and through the Barbara Topete Memorial**  
**Benevolence Fund.**

Feed the hungry and help those in trouble  
Isaiah 58:10

**FRIDAYS AT NOON - Prayer in the chapel**  
**Prayer board is available for you to write a prayer**  
**or email us a prayer request.**



**December prayer board**

**Community Events:**

**AA meeting** in the chapel hall every Monday at 7 pm  
**PB food bank** - third Tuesday every month - January 21

Online giving is available by going to our website

[www.chapelbytheseawa.org](http://www.chapelbytheseawa.org)

and click the *GIVING* button.

**In Christ's ministry,**  
**Pastor Linda**

**Email:** [pastor@chapelbytheseawa.org](mailto:pastor@chapelbytheseawa.org)

**Manse landline:** 360.276.8143

[www.chapelbytheseawa.org](http://www.chapelbytheseawa.org)

**Mailing address:** P O Box 194, Pacific Beach, WA 9857

